

Feral Pigs in San Diego County

Participant's Guide to the Web Site

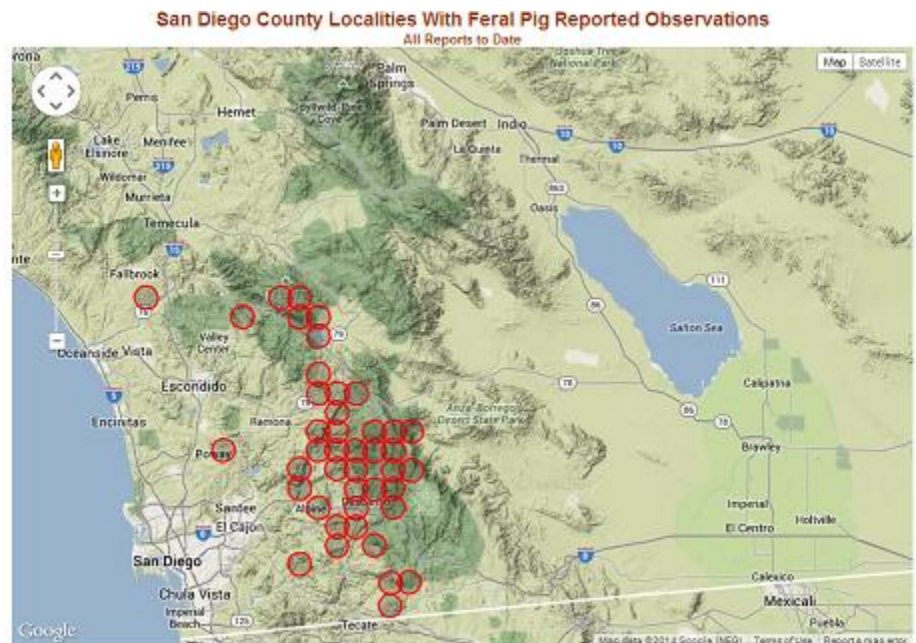
The Feral Pigs project web site has been established to provide a central source of information to the public and a tool by which project participants can submit observation reports, upload photographs, and search the reports database. The participant's access to the web site tools is restricted by login. To obtain login credentials, contact Scott Tremor at 619.255.0209 or email: stremor@sdnhm.org.



Log In By clicking the Participant Login link on the home page, the login page will appear. Using your login name and password, a successful login will result in links to the participant's tools appearing on the page.

Current Overview Clicking the link on the page *See a Current Overview of Reported Localities* brings up a county map with each of the squares* in which a report was made circled.

*The approximately 3-mile by 3-mile TRS-based squares used by the SDNHM Bird Atlas and Plant Atlas.



Submit a report of an observation There are two ways to submit an observation report — by clicking the location on a map or by manually entering the Lat/Long or UTM coordinates on a form. Both methods collect the same data, the only difference being the method of entering the coordinates of the location of the observation. Use the appropriate link on the login page to open either of the reporting pages.

Report by Map Open the form and zoom and pan the map as required to zero in on the

Feral Pigs in San Diego County
 Report a Feral Pig Observation or Detection
 Valid report session for: John Sanbornski

Click the map to place a pig marker on the map with his nose on the observation spot. Click again to move it.
 Enter observation data below and click the **Save the Report** button

Observation Date/Time: Day: 1 Month: Jan Year: 2013 Time: 05:30 AM

Point (from map): Latitude: 33.21801 Longitude: -116.33148

Location Info: Elevation (feet): 435 Distance From Water (miles): 27 Survey ID: TestEntry

Area Info: Veg Type: Other/Unspecified Area Descript: desert wash

Sign: Type: Wallow Age of Sign (if not visual): 2 days

Visual: Number of animals: 12 Piglets observed: No

Locality: along the wash near the gypsum mine

Comment: too many to count, twelve is my best guess

Successful report entry. Report #513. Refer to that report number if uploading a photo.
 Save the Report

location of the observation you are reporting. Click the cursor crosshairs on the spot of the observation. A pig icon will appear with his nose on that spot. You can click multiple times until you are satisfied you're on the right spot. Then complete the form below using the text boxes and drop-down lists. Note that the Latitude and Longitude boxes show you the coordinates of the spot you clicked but you cannot enter numbers into those boxes. When you've completed all the entries (none are mandatory) click the **Save the Report** button. the report will be saved to the database and assigned a report number. The report number will be required later if

you want to upload a photo for this report, but you can always find the report number later by viewing a summary list of your reports.

With each report submitted, a few things are calculated and entered into the database automatically. Military 24-hour time is entered. Both UTM and Lat/Long coordinates are entered regardless of the method of reporting, and GIS determinations are made if the reported point falls within San Diego County conserved lands, National Forest, or Indian Reservations.

Report by Coordinates If you have the coordinates of the location of the observation, you can use this form to enter them directly in either Lat/Long or UTM coordinates. Otherwise, this form is identical to the map form.

Feral Pigs in San Diego County
Report a Feral Pig Observation or Detection
Direct Entry of Lat/Long or UTM
Valid report session for: John Sanbornski
Enter observation data below and click the Save the Report button

Observation Date/time: Day: 1 Month: Jan Year: 2013 Time: 06:30 AM

Point Location: Latitude: Longitude: Decimal degrees
Enter Lat/Long or UTM not both

UTM Easting: 526113 UTM Northing: 3662989 (Integer values, not truncated)

Location Info: Elevation (feet): 453 Distance From Water (miles): 2 Survey ID: TestEntry

Area Info: Veg Type: Conifer woodland Area Description: deep woods trees over 30 feet

Sign: Type: Scat Age of Sign (if not visual): fresh

Visual: Number of animals: 0 Piglets observed: No

Locality: on the crest of marigold mountain

Comment: steep terrain about a 30% slope

[Save the Report](#)

Edit a Report After a report has been submitted, it can be edited by the participant who entered it. Open the form using the link on the Login page and enter the report number you wish to edit.

Click the **Select this Report** button and the form will fill with the data from that report. Change any or all of the data and then click the **Save the Edits** button. The report record will be rewritten with the data showing on the form.

Feral Pigs in San Diego County
Edit an Observation Report
Valid report session for: Gary Reece
Enter Report Number to Edit: 510 [Select this Report](#)
Report Number 510 ready for edit
Enter the revised observation data below and click the Save the Edits button

Observation Date/time: Day: 22 Month: Aug Year: 2012 Time: 09:00 PM

Point (from map): Latitude: 32.88653 Longitude: -116.55362 Decimal degrees

Location Info: Elevation (feet): -3 Distance From Water (miles): 0 Survey ID:

Area Info: Veg Type: Oak woodland Area Description:

Sign: Type: Other Age of Sign (if not visual): fresh

Visual: Number of animals: 1 Piglets observed: No

Locality:

Comment: Single picture of boar on trail cam

Clicking the Save button will save the record exactly as shown above. Blank fields will be blank.

[Save the Edits](#)

Summary of Your Reports Use the login page link to see a brief summary list of the reports you submitted.

Summary of Reports for John Sanbornski

Rpt #	Date	Time	Lat	Long	Sign	Pigs	Area
513	1/1/2013	06:30 AM	32.82652	117.02637	Walkow	0	same
514	1/1/2013	06:30 AM	33.09326	116.67473	Visual	3	

Upload a Photo Use the link on the login page to select the Photo Upload page. Enter a report number that the photo documents, enter the other data, click the **Browse . .** button to find the photo in your computer then click the **Upload the Picture** button. Observe the photo limits noted in the paragraph in red. The Label, if entered, will be drawn on the photo. You can use that for a "Photo by . . ." label . The Caption and Comments will appear on the web page displaying the photo.

Search Reports Database by Map


Use the link titled **Find Reports by Area** to use a map to find reports submitted for any locality. This page opens with a map that you can enlarge by clicking the Large Map radio button in the upper right panel. When you click on this map, icons will appear for all reports made within a ten-mile square around the point you clicked. A summary of those reports is listed in the right panel. A summary of the report data appears in a balloon when an icon is clicked. If the report includes a photo, a link to the photo(s) will be included in the balloon.

Search Reports Database by Criteria On the login page, click the link labeled **Search Reports Database** to open the search page. Using the drop-down boxes, select the criteria to use in the database search. The **Section** drop-down refers to the sections of the county depicted on the small map.

Search the San Diego County Feral Pig Reports Database

Select search criteria using the drop-down boxes. Refer to map for county section. Click the Search button.

Year: 2012
 Month: Any
 Section: Central
 Elevation (ft): > 0
 Veg Type: Any
 Sign Type: Any
 With Photos: Whatever



Search
 22 reports in 4 pages.

← Back Page 1 of 4 Next →

Report No. 506, by: Gary Reese Observation Date: 1/13/2012 Observation Time: 1930
 Latitude: 32.8922 Longitude: -116.692 Elevation: n/a Feet Distance to Water: 0
 Sign Observed: Wallow Age of Sign: fresh Number of animals: 1 Pile(s) Observed: No
 Vegetation: Alpine meadow Area Description:
 Conserved Land? CUYAMACA RANCHO STATE PARK: Nat Forest? No: Reservation? No
 Comments:
 Photos: No Photo(s)

Report No. 209, by: Gary Reese Observation Date: 1/4/2012 Observation Time: 0930
 Latitude: 32.8562 Longitude: -116.620 Elevation: 0 Feet Distance to Water: 0
 Sign Observed: rooting Age of Sign: unknown Number of animals: 3 Pile(s) Observed: No
 Vegetation: Other/Unspecified Area Description: n/a
 Conserved Land? No: Nat Forest? Cleveland NF Main: Reservation? No
 Comments: Sign note: rooting, tracks;
 Photos: No Photo(s)

Report No. 270, by: Gary Reese Observation Date: 1/4/2012 Observation Time: 0930
 Latitude: 32.8562 Longitude: -116.620 Elevation: 0 Feet Distance to Water: 0
 Sign Observed: rooting Age of Sign: unknown Number of animals: 3 Pile(s) Observed: No

Reports matching the selected criteria will be listed in the box below. The number of reports found and the number of pages are shown under the **Search** button. When the list appears you can scroll through the pages to view all the reports. If a report has associated photo(s), a link will appear in the report summary to view the photo(s).

The photos page is shown here. If more than one photo is attached to a report, you can scroll through them using the **Back** and **Next** buttons.

Documentation Photographs — San Diego Feral Pigs

Photographs Copyright 2010 San Diego Natural History Museum

← Back Next →

Photo 3 of 3

Report# 41 Photo by: Harry Hogwart Date: 3/15/2010
 Subject: Rockhill Photo: FP000017.jpg
 Caption: Got the bacon, has anyone seen a chicken?
 Comment: 41
 Area: very woody



[SDNH Birds and Mammals](#) [SDNH Home](#)
 © 2005 San Diego Natural History Museum

Secure Shared Document Storage The web site provides for secure database storage of documents to be shared with other participants. On the LogIn page links are provided to web pages that facilitate the upload and download of documents. The following types of documents can be uploaded to storage: Text (txt), Google Earth (kml, kmz), Adobe PDF (pdf), Excel (xls, xlsx), Word (doc, docx), and PowerPoint (ppt, pptx). Maximum document size is 64 MB.

Documents are not stored as files on the web server and therefore cannot be directly accessed. They are stored in a database, separate from the primary Feral Pig DB, and can only be accessed through the log-in validated page.